

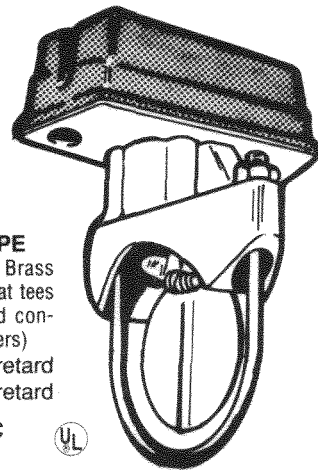


Call Potter-Roemer for current listings and approvals. Dimensions are subject to manufacturers tolerance and change without notice. We assume no responsibility for use of superseded or void data.

# SPRINKLER AND STANDPIPE ACCESSORIES

## FLOW SWITCH

**REGULARLY FURNISHED:** Red tamper proof switch housing with flow paddle. Adjustable pneumatic retard setting from 0 to 70 seconds. Two single pole, double throw microswitches to operate separate circuits, 120 Volt A.C. UL Listed for schedule 10 and 40 steel water pipe. Type and size as selected by Figure Number.



**6200 SERIES**  
for Steel Pipe

- |                               |      |
|-------------------------------|------|
| Fig.                          | Size |
| <input type="checkbox"/> 6201 | .2"  |
| <input type="checkbox"/> 6202 | .2½" |
| <input type="checkbox"/> 6203 | .3"  |
| <input type="checkbox"/> 6204 | .3½" |

**6210 SERIES**  
for Copper Tube

- |                               |      |
|-------------------------------|------|
| Fig.                          | Size |
| <input type="checkbox"/> 6211 | .2"  |
| <input type="checkbox"/> 6212 | .2½" |

**6215 SERIES TEE TYPE**  
for 1", 1½" and 1¾" Steel or Brass Pipe or 1" thru 2" copper sweat tees (requires tee with 1" threaded connection for installation by others)

- |                               |                |
|-------------------------------|----------------|
| <input type="checkbox"/> 6216 | with retard    |
| <input type="checkbox"/> 6217 | without retard |

Contact Ratings: 10A @ 125/250 VAC  
2.5A @ 24 VDC



## SUPERVISORY SWITCH

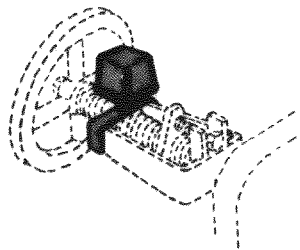


Fig. 6220

For use with OS&Y gate valve from ½" thru 12". Red tamper proof cover with J-bolt mounting. Two single pole double throw microswitches.

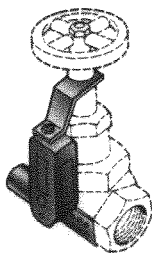


Fig. 6221

For use with rising stem Globe and Gate Valves, ½" thru 2½". Red tamper proof cover with collar and mounting bracket. One single pole, single throw microswitch. SPECIFY: Size of valve and type (Gate or Globe).

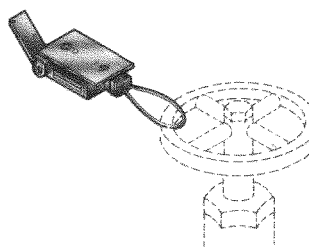


Fig. 6222

For use with sprinkler system valves. Remote installation allows varied application. Red tamper proof cover with mounting bracket and waterproof cable. One single pole, normally closed, microswitch.



Fig. 6223

For use with post indicator type valves and regulating valves. Red tamper proof cover, ½" pipe mounting nipple, two single pole double throw microswitches.

Contact Ratings: 10A @ 125/250 VAC  
2.5A @ 24 VDC

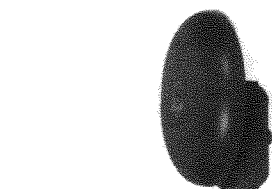


Fig. 6230

**REGULARLY FURNISHED:** 10" round red enamel steel bell with a 120 Volt A.C. electric motor.

**VARIATION:** 12 or 24 Volt D.C. Electric Motor (specify)

## BELL GUARD

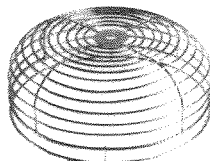


Fig. 6235

**REGULARLY FURNISHED:** Cadmium plated wire cage with center hole for attachment to bell.

## PRESSURE GAUGE

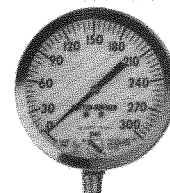


Fig. 6240

**REGULARLY FURNISHED:** Stainless steel 3½" Dia. case with ¼" male N.P.T. connection. Glass enclosed dial with pressure range of 0-300 P.S.I.