



# SPRINKLER ACCESSORIES AND METAL IDENTIFICATION SIGNS

## ALARM BELL



**Model 6230**

**FUNCTION:** Used on sprinkler or standpipe systems to sound alarm when activated by electrical pulse from a flow switch or other supervisory devices.

**REGULARLY FURNISHED:** 10"/25.4 cm round red enamel steel bell with a 120 Volt A.C. electric motor.

**VARIATION:** 12 or 24 Volt D.C. Electric Motor (specify).

## BELL GUARD



**Model 6235**

**FUNCTION:** Used to protect alarm bell operating mechanism from entry of foreign matter.

**REGULARLY FURNISHED:** Red wire cage with center hole for attachment to bell.

## PRESSURE GAUGE



**Model 6240**

**FUNCTION:** Used on sprinkler or standpipe system to provide pressure readings.

Model	Size	Pressure
6240	. . . 3 1/2" / 8.9 cm	0-300 PSI / 0-20.6 bars
6241	. . . 2 1/2" / 6.4 cm	0-100 PSI / 0-06.8 bars
6242	. . . 2 1/2" / 6.4 cm	0-200 PSI / 0-13.7 bars
6243	. . . 2 1/2" / 6.4 cm	0-300 PSI / 0-20.6 bars
6244	. . . 2 1/2" / 6.4 cm	0-400 PSI / 0-27.5 bars
6245	. . . 2 1/2" / 6.4 cm	0-600 PSI / 0-41.3 bars

## METAL IDENTIFICATION SIGNS

**2" x 6" / 5 cm x 15.2 cm**

Model No.	Lettering	Model No.	Lettering
6301	AUXILIARY DRAIN	6313	DRAIN VALVE
6302	INSPECTORS TEST	6314	ALARM TEST
6303	WATER MOTOR LINE	6315	TEST VALVE
6304	OPEN SPRINKLER CONTROL	6316	CONTROL VALVE
6305	OPEN SPRINKLER DRAIN	6317	ALARM LINE
6306	IN THIS BUILDING	6318	AIR LINE
6307	FROM CITY MAIN	6319	MAIN CONTROL
6308	IN THIS SECTION	6320	FIRE SPRINKLER VALVE DO NOT CLOSE
6309	ANTI-FREEZE SYSTEM	6321	DRY STANDPIPE
6310	ENTIRE SYSTEM	6322	SPRINKLER DRAIN VALVE
6311	DRAIN	6324	GAS SHUTOFF
6312	MAIN DRAIN	6325	DANGER UNSAFE WATER

**4" x 8" / 10.2 cm x 20.3 cm**

6329	DRY STANDPIPE SHUTOFF	6332	FIRE ALARM (L-SHAPED DOUBLE FACE)
6330	WET STANDPIPE SHUTOFF	6333	FIRE ALARM (V-SHAPED DOUBLE FACE)
6331	COMBINATION STANDPIPE SHUTOFF		

**5 1/2" x 12" / 14 cm x 30.4 cm**

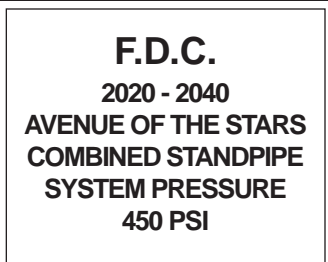
**6" DIAMETER / 15.2 cm**

6334	FIRE EXT AND ALARM INSIDE	6340	SPRINKLER FIRE ALARM WHEN BELL RINGS CALL FIRE DEPT OR POLICE
------	---------------------------	------	---

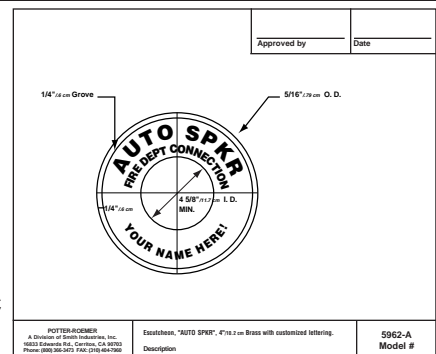
## SIGN CHAIN

6345	BRIGHT PLATED METAL CHAIN FOR IDENTIFICATION SIGNS
------	--

## CUSTOM ENGRAVED ESCUTCHEONS, PLATES AND SIGNS



- MATERIALS**
- BRASS
  - ALUMINUM
  - STEEL
  - LAMINATED PLASTIC
  - POWDER COATED
  - MANY MORE



**FAX YOUR ROUGH DRAWING. WE'LL RETURN A CAD DRAWING FOR YOUR APPROVAL.**