



# FIRE HOSE STORAGE DEVICES

(SELECT EQUIPMENT BELOW)

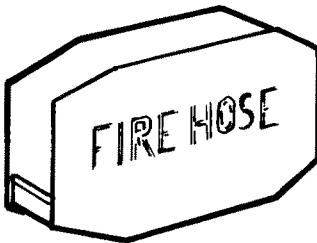
## 2887 PIPE MOUNTED



**REGULARLY FURNISHED:** Non-Automatic steel pin type hose rack with red glossy polyester finish for use with 2-1/2" polyflex hose and nipple mounting.

OPTIONS:  - E Wall bracket  
 - G Pipe clamp (Specify pipe size \_\_\_\_\_ )

## 2888 COLUMN MOUNTED

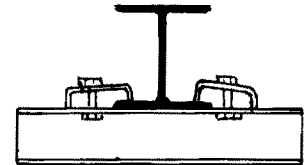
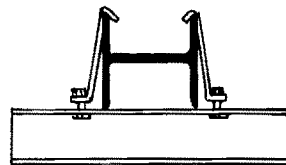


**REGULARLY FURNISHED:** Hose holder constructed of 12 gauge steel with red polyester finish. Mounting brackets supplied for attaching to either side of an 8" through 12" "I" beam. Maximum capacity is 100' - 1-1/2" S.J. hose.

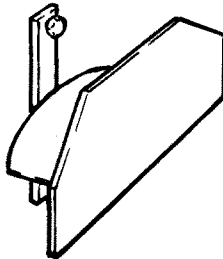
INSTALLATION

DIMENSIONS:

Width - 20"  
Height - 17"  
Depth - 4"



## 2889 WALL MOUNTED



**REGULARLY FURNISHED:** Rack constructed of 12 gauge steel with red glossy polyester finish. Maximum capacity is 100 ft. -- 2-1/2" S.J. hose.

DIMENSIONS:

Width - 16"  
Height - 10"  
Depth - 9"

## SELECT EQUIPMENT

### HOSE LENGTH:

50'  75'  100'

### HOSE BRASS PINLUG COUPLED ◀FM▶

- 2901 1-1/2" Single Jacket Lined 300 lb. Test
- 2902 2-1/2" Single Jacket Lined 300 lb. Test
- 2911 1-1/2" Double Jacket Lined 600 lb. Test
- 2914 2-1/2" Double Jacket Lined 600 lb. Test
- 2915 1-1/2" Single Jacket Lined 500 lb. Test Polyflex
- 2916 2-1/2" Single Jacket Lined 500 lb. Test Polyflex
- 2926 1-1/2" Single Jacket Lined 500 lb. Test Superflex
- 2929 2-1/2" Single Jacket Lined 500 lb. Test Superflex.

Other-specify

### OPTION:

U/L Label

### THREADS:

- N.S.T.
- Other-Specify

### NOZZLE

- 2945 1-1/2" Plain Plastic.
- 2947 1-1/2" Plain Brass.
- 2948 2-1/2" Plain Brass
- 2960 1-1/2" Red Lexan Fog ◀FM▶
- 2962 1-1/2" Brass Fog U/L and ◀FM▶
- 2972 1-1/2" Brass Fog with Rubber Bumper U/L and ◀FM▶
- 2973 2-1/2" Brass Fog with Rubber Bumper U/L
- 2980 1-1/2" Red Lexan All Fog ◀FM▶
- 2985 1-1/2" Brass All Fog U/L and ◀FM▶

### VALVE

- 4060 1-1/2" Female x Male Brass Angle U/L and ◀FM▶
- 4065 2-1/2" Female x Male Brass Angle U/L and ◀FM▶
- 4080 1-1/2" Female x Male Brass Angle Pressure Restricting U/L
- 4085 2-1/2" Female x Male Brass Angle Pressure Restricting U/L

Other-Specify

DATE

12-31-92

FIGURE NUMBER

2887 - 2889

DIMENSIONS ARE SUBJECT TO MANUFACTURERS TOLERANCE AND CHANGE WITHOUT NOTICE. WE ASSUME NO RESPONSIBILITY FOR USE OF SUPERSEDED OR VOID DATA.

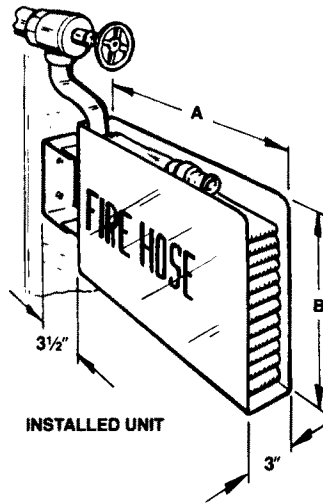


Call Potter-Roemer for current listings and approvals. Dimensions are subject to manufacturers tolerance and change without notice. We assume no responsibility for use of superseded or void data.

## FIRE HOSE STORAGE DEVICES

### SHOWN WITH EQUIPMENT – SELECT EQUIPMENT BELOW

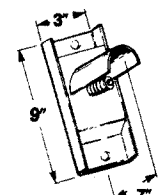
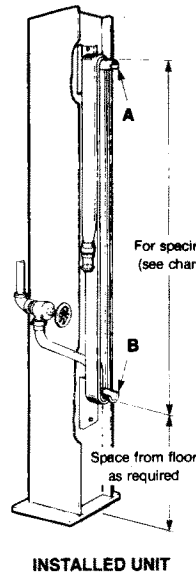
### HUMP TYPE RACK



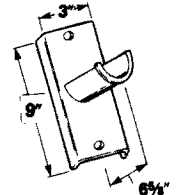
**REGULARLY FURNISHED:**  
Solid sides, steel construction with red glossy polyester finish and identification decal. Wall brackets permit a full 180° swing.

**OPTION:** –G pipe clamp. Specify pipe size.

### 2891 HOSE HANGER



"A" Spring loaded upper hanger



"B" Solid lower hanger

**MAXIMUM CAPACITY:**  
100' 2 1/2" double jacket hose

**REGULARLY FURNISHED:**  
Spring-loaded upper hanger, solid lower hanger of 12 gauge steel with red glossy polyester finish.

#### HANGER SPACING CHART (approx.)

FIG. NO.	A	B	MAXIMUM CAPACITY	NUMBER LOOPS	HOSE LENGTH		
					50 FT	75 FT	100 FT
<input type="checkbox"/> 2890	24	16	100' 1 1/2" 2915	2	12 FT		
<input type="checkbox"/> 2890-2	28	24	100' 1 1/2" 2911	3	8 FT	12 FT	
				4	6 FT	9 FT	12 FT



### SELECT EQUIPMENT

**HOSE LENGTH**

- 50'    75'    100'

**HOSE BRASS PINLUG COUPLED ◀ FM ▶**

- 2901 1 1/2" Single Jacket Lined 300 lb. Test
- 2902 2 1/2" Single Jacket Lined 300 lb. Test (2891 only)
- 2911 1 1/2" Double Jacket Lined 600 lb. Test
- 2914 2 1/2" Double Jacket Lined 600 lb. Test (2891 only)
- 2915 1 1/2" Single Jacket Lined 500 lb. Test Polyflex
- 2916 2 1/2" Single Jacket Lined 500 lb. Test Polyflex (2891 only)
- 2926 1 1/2" Single Jacket Lined 500 lb. Test Superflex
- 2929 2 1/2" Single Jacket Lined 500 lb. Test Superflex (2891 only)
- Other (Specify)

**OPTION**

- U/L Label

**THREADS**

- NST
- Other (Specify)

**NOZZLE**

- 2945 1 1/2" Plain Plastic
- 2947 1 1/2" Plain Brass
- 2948 2 1/2" Plain Brass (2891 only)
- 2960 1 1/2" Red Lexan Fog ◀ FM ▶
- 2962 1 1/2" Brass Fog U/L and ◀ FM ▶
- 2972 1 1/2" Brass Fog With Rubber Bumper U/L and ◀ FM ▶
- 2973 2 1/2" Brass Fog With Rubber Bumper (2891 only) U/L and ◀ FM ▶
- 2980 1 1/2" Red Lexan All Fog ◀ FM ▶
- 2985 1 1/2" Brass All Fog U/L
- Other (Specify)

**VALVE**

- 4060 1 1/2" Female x Male Brass Angle U/L and ◀ FM ▶
- 4065 2 1/2" Female x Male Brass Angle (2891 only) U/L and ◀ FM ▶
- 4080 1 1/2" Female x Male Brass Angle Pressure Restricting U/L
- 4085 2 1/2" Female x Male Brass Angle Pressure Restricting (2891 only) U/L
- Other (Specify)

DATE

6-2-94

FIGURE NUMBER

2890-2891