



STRAIGHT STREAM NOZZLES

DIMENSIONS ARE SUBJECT TO MANUFACTURERS TOLERANCE AND CHANGE WITHOUT NOTICE. WE ASSUME NO RESPONSIBILITY FOR USE OF SUPERSEDED OR VOID DATA.



FIG. 2945

PLAIN PLASTIC

REGULARLY FURNISHED: 1½" x 10" cyclac plastic nozzle for 1½" hose.

THREADS AVAILABLE:

- NST
- NPSH
- NYFD



PLAIN BRASS

REGULARLY FURNISHED: Cast brass nozzle with satin finish.

- Fig.**
- 2947 1½" x 10"
 - 2948 2½" x 12"

- OPTIONAL FINISHES:**
- B Polished Brass
 - C Rough Chrome Plated
 - D Polished Chrome Plated

- THREADS:**
- NST
 - OTHER _____



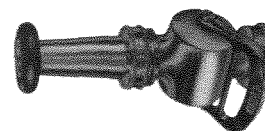
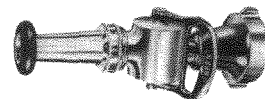
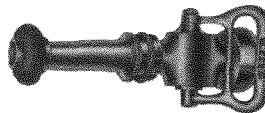
FIG. 2949

UNDERWRITERS PLAYPIPE

REGULARLY FURNISHED: Cast brass base, swivel handle and tip with red painted copper pipe. Discharge end threaded U.L.T. 2-1/2" x 30" with 1-1/8" tip.

- THREADS:** NST
 OTHER _____

- OPTION:**
 —BR Playpipe Brackets



SHUTOFF NOZZLES

REGULARLY FURNISHED: Cast brass with polished finish. Quick shutoff handle and rubber bumper.

- OPTIONAL FINISH:**
 —D Polished Chrome Plated

- THREADS:**
 NST
 OTHER _____

- Fig.**
- 2950 For 1½" Hose. Overall length with tip 9". Tip orifice size ½".
 - 2951 For 2½" Hose. Overall length with tip 13". Tip orifice size 1".
 - 2952 For playpipe use (threaded ULT only.) Overall length with tip 10¼". Tip orifice size 1".

VARIATIONS:
Tip orifices available, specify size:

- ¼" thru ¾"
- ⅜" thru 1¼"
- ⅝" thru 1¼"