

## SERIES 5801-5836 FLUSH FIRE DEPT. OUTLET CONNECTIONS

### *Used as an Auxiliary Water Supply.*

#### **SINGLE HYDRANT**

Polished brass 8" plate lettered HYDRANT and female N.P.T. x male hose thread snoot with cap and chain. Round or square plate and size as selected by model number.

#### **TWO-WAY & THREE-WAY HYDRANTS**

Polished brass 8" plate lettered HYDRANT and female N.P.T. x male hose thread snoot with cap and chain. Rectangle plate and size as selected by model number.

### **MODEL SELECTION**

#### **ROUND SINGLE HYDRANTS**

- ☐ **5801** 2-1/2" Female NPT x Male Hose
- ☐ **5802** 3" Female NPT x 2-1/2" Male Hose
- ☐ **5803** 3" Female NPT x Male Hose

#### **SQUARE SINGLE HYDRANTS**

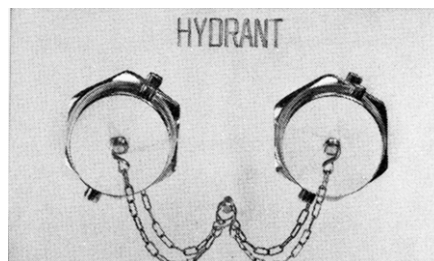
- ☐ **5811** 2-1/2" Female NPT x Male Hose
- ☐ **5812** 3" Female NPT x 2-1/2" Male Hose
- ☐ **5813** 3" Female NPT x Male Hose

#### **TWO-WAY HYDRANTS**

- ☐ **5821** 4" Female NPT Back Inlet x 2-1/2" Male Hose
- ☐ **5822** 4" Female NPT Angle Inlet x 2-1/2" Male Hose
- ☐ **5825** 6" Female NPT Back Inlet x 2-1/2" Male Hose
- ☐ **5826** 6" Female NPT Angle Inlet x 2-1/2" Male Hose

#### **THREE WAY HYDRANTS**

- ☐ **5835** 6" Female NPT Back Inlet x 2-1/2" Male Hose
- ☐ **5836** 6" Female NPT Angle Inlet x 2-1/2" Male Hose



MODEL 5821 (Shown)

### **PRODUCT OPTIONS**

#### **FINISHES:**

- ☐ -D Polished Chrome Plated

#### **OPTION:**

- ☐ -G 3" Male hose Thread Outlet
- ☐ -GRV Grooved Inlet

#### **THREADS:**

- ☐ N.S.T.
- ☐ Other \_\_\_\_\_

#### **LETTERING AVAILABLE:**

- ☐ HYDRANT

Call Potter Roemer - Fire Pro for current listings and approvals. Dimensions are subject to manufacturer's tolerance and may change without notice. Potter Roemer - Fire Pro assumes no responsibility for use of void or superceded data. © Copyright Potter Roemer - Fire Pro, Member of Morris Group International™ Please visit [potterroemer.com](http://potterroemer.com) for most current specifications.

**5801-5836 SERIES**

Date: 12/04/24

**MEMBERSHIP**



FIRE EQUIPMENT  
MANUFACTURERS'  
ASSOCIATION



CASPE  
American Society of  
Plumbing Engineers

**ONFSA**  
NATIONAL FIRE SPRINKLER ASSOCIATION, INC.



### **POTTER ROEMER**

Headquarters:  
P.O. Box 3527  
City of Industry, CA  
91744 U.S.A.  
Los Angeles Area  
800-366-3473  
626-855-4890

Also in:  
New York (800) 526-4592  
Chicago (800) 547-3473  
Atlanta (800) 762-0542  
Miami (833) 744-3473  
Dallas (866) 644-3473

[www.potterroemer.com](http://www.potterroemer.com)

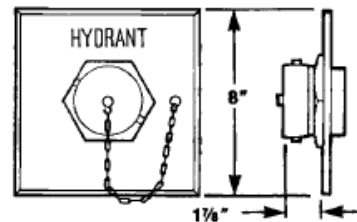
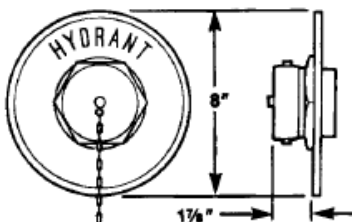
## SERIES 5801-5836 FLUSH FIRE DEPT. OUTLET CONNECTIONS

### MODEL DIMENSIONS

ROUND SINGLE HYDRANT	
Model No.	Size
5801	2-1/2"
5802	2-1/2" x 3"
5803	3"

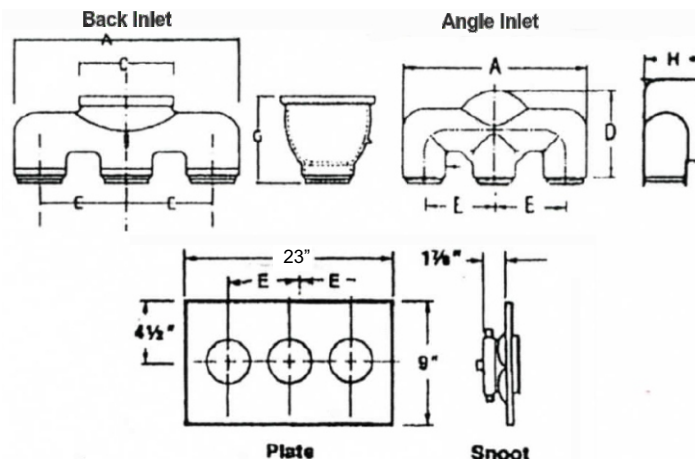
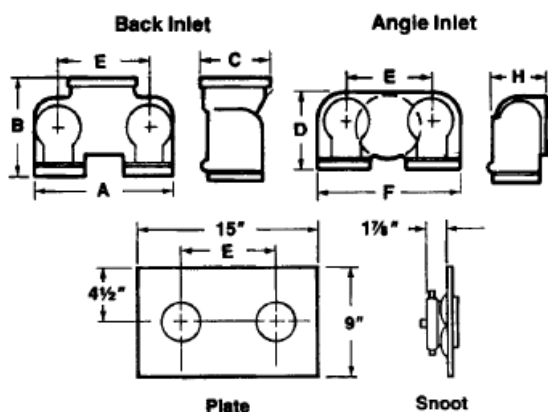


SQUARE SINGLE HYDRANT	
Model No.	Size
5811	2-1/2"
5812	2-1/2" x 3"
5813	3"



### TWO-WAY & THREE-WAY HYDRANTS

Inlet Location		Size	No. Outlets	A	B	C	D	E	F	G	H
Back Model No.	Angle Model No.										
5821	5822	4 x 2-1/2 x 2-1/2	2	10-7/8	6-1/32	5-1/32	6-1/32	7	10-7/8	-	6-5/32
5825	5826	6 x 2-1/2 x 2-1/2	2	11-15/32	8-19/32	7-3/32	8-19/32	7-5/8	11-15/32	-	6-23/32
5835	5836	6 x 2-1/2 x 2-1/2 x 2-1/2	3	17-47/64	-	7-33/64	8-45/64	6-5/8	-	7-1/64	6-17/32



### Two-Way Hydrant

### Three-Way Hydrant

Call Potter Roemer - Fire Pro for current listings and approvals. Dimensions are subject to manufacturer's tolerance and may change without notice. Potter Roemer - Fire Pro assumes no responsibility for use of void or superseded data. © Copyright Potter Roemer - Fire Pro, Member of Morris Group International™ Please visit [potterroemer.com](http://potterroemer.com) for most current specifications.

**5801-5836 SERIES**

**MEMBERSHIP**



FIRE EQUIPMENT  
MANUFACTURERS'  
ASSOCIATION



**ONFSA**  
NATIONAL FIRE SPRINKLER ASSOCIATION, INC.



### POTTER ROEMER

Headquarters:  
P.O. Box 3527  
City of Industry, CA  
91744 U.S.A.  
Los Angeles Area  
800-366-3473  
626-855-4890

Also in:  
New York (800) 526-4592  
Chicago (800) 547-3473  
Atlanta (800) 762-0542  
Miami (833) 744-3473  
Dallas (866) 644-3473

[www.potterroemer.com](http://www.potterroemer.com)