

SPECIFICATIONS

FLOW SWITCH

Red tamper proof switch housing with flow paddle.
Adjustable pneumatic retard setting from 0 to 70 seconds.
Two single pole, double throw microswitches to operate separate circuits, 120 Volt A.C. UL Listed for schedule 10 and 40 steel water pipe. Type and size as selected by model number.

MODEL SELECTION

FLOW SWITCHES

- 6201 2" For Steel Tube
- 6202 2-1/2" For Steel Tube
- 6203 3" For Steel Tube
- 6204 3-1/2" For Steel Tube
- 6205 4" For Steel Tube
- 6206 5" For Steel Tube
- 6207 6" For Steel Tube
- 6208 8" For Steel Tube
- 6211 2" For Copper Tube
- 6212 2-1/2" For Copper Tube
- 6216 Tee Type with Retard
- 6217 Tee Type without Retard

SUPERVISORY SWITCHES

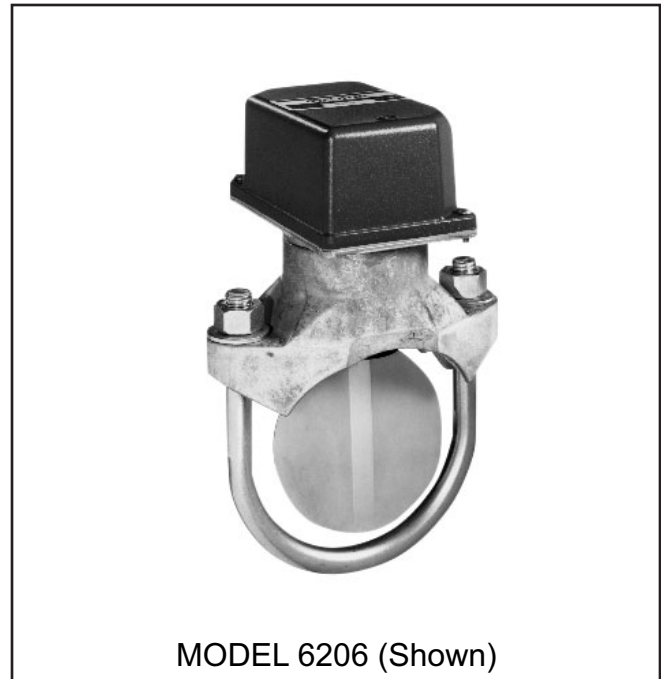
- 6220 For OS&Y Gate valves
- 6222 For Sprinkler System Valves
- 6223 For Post Indicator Type Valves & Regulating Valves

ACCESSORIES

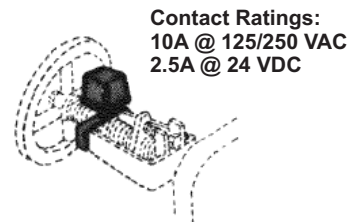
- 6230 Bell
 - 12 Volts 24 Volts
- 6235 Bell Guard
- 6240 Pressure Gauge (UL Listed)

PRODUCT OPTIONS

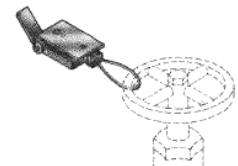
"NO AVAILABLE OPTIONS"



MODELS



SUPERVISORY SWITCH
MODEL 6220



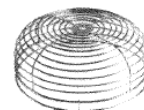
SUPERVISORY SWITCH
MODEL 6222



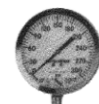
SUPERVISORY SWITCH
MODEL 6223



BELL
MODEL 6230



BELL GUARD
MODEL 6235



PRESSURE GAUGE
MODEL 6240

Call Potter Roemer - Fire Pro for current listings and approvals. Dimensions are subject to manufacturer's tolerance and may change without notice. Potter Roemer - Fire Pro assumes no responsibility for use of void or superseded data. © Copyright Potter Roemer - Fire Pro, Member of Morris Group International™ Please visit potterroemer.com for most current specifications.

6201-6240 SERIES Date: 09/20/18

MEMBERSHIP



FIRE EQUIPMENT
MANUFACTURERS'
ASSOCIATION

ONFSA
NATIONAL IRRIE SPRINKLER ASSOCIATION, INC.



CASPE
American Society of
Plumbing Engineers



POTTER ROEMER/FIRE PRO

Headquarters:
P.O. Box 3527
City of Industry, CA
91744 U.S.A.
Los Angeles Area
800-366-3473
626-855-4890

Also in:
New York (800) 526-4592
Chicago (800) 547-3473
Atlanta (800) 762-0542
Miami (866) 961-3473
Dallas (866) 644-3473

www.potterroemer.com