

SPECIFICATIONS

Potter Roemer/ Fire Pro® Master Stream fog/straight stream nozzles are forged from heavy aluminum or brass casting that withstands caustic or salt water environments using deck pipes and station monitors. Precision machining ensures ease of operation when changing patterns at all pressure ranges. Patterns change from a straight stream with maximum effective reach to full 180° fog curtain.

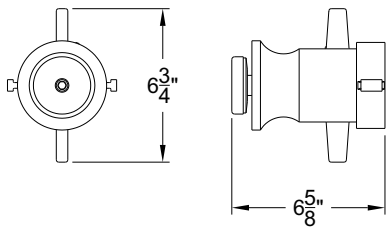


FP2000BCG (Shown)

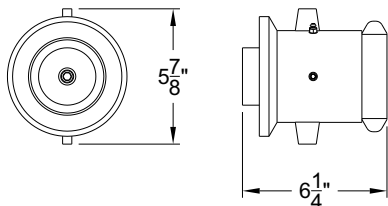
REGULARLY FURNISHED

- Combination fog and straight stream
- A = heavy aluminum, B = red brass casting
- Gray hard anodized or cast brass finish
- Delrin seat for shutoff
- Factory preset GPM

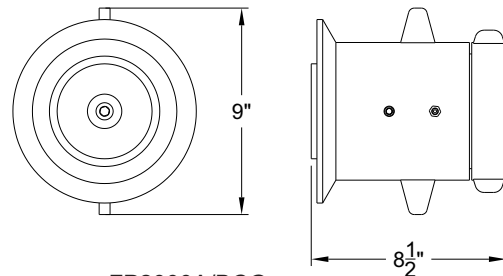
MODEL	INLET In (mm)	WEIGHT Lbs (kg)	GPM (lpm)
FP500A	2-1/2" (64)	9 (4)	350/500 (1325/1893)
FP500B	2-1/2" (64)	9 (4)	350/*500 (1325/1893)
FP500ACG	2-1/2" (64)	9 (4)	500/750 (1893/2839)
FP500BCG	2-1/2" (64)	9 (4)	*500/750 (1893/2839)
FP1000ACG	2-1/2" (64)	9 (4)	1000/1250 (3785/4732)
FP1000BCG	2-1/2" (64)	9 (4)	1000/1250 (3785/4732)
FP2000ACG	4" (102)	11 (5)	1500/1700/2000/2500 (5678/6435/7571/9464)
FP2000BCG	4" (102)	11 (5)	1500/1700/2000/2500 (5678/6435/7571/9464)



FP500A/B



FP500A/BCG & FP1000A/BCG



FP2000A/BCG

WARNING: Cancer and Reproductive Harm - www.P65Warnings.ca.gov

Call Potter Roemer - Fire Pro for current listings and approvals. Dimensions are subject to manufacture's tolerance and may change without notice. Potter Roemer - Fire Pro assumes no responsibility for use of void or superceded data. Please visit potterroemer.com for most current specifications

MS-FP500

Revised: 09/05/18

MEMBERSHIP



FIRE EQUIPMENT
MANUFACTURERS'
ASSOCIATION

ONFSA
NATIONAL IRRE SPRINKLER ASSOCIATION, INC.



CASPE
American Society of
Plumbing Engineers



POTTER ROEMER/FIRE PRO

Headquarters:
P.O. Box 3527
City of Industry, CA
91744 U.S.A.
Los Angeles Area
800-366-3473
626-855-4890

Also in:
New York (800) 526-4592
Chicago (800) 547-3473
Atlanta (800) 762-0542
Miami (866) 961-3473
Dallas (866) 644-3473

www.potterroemer.com